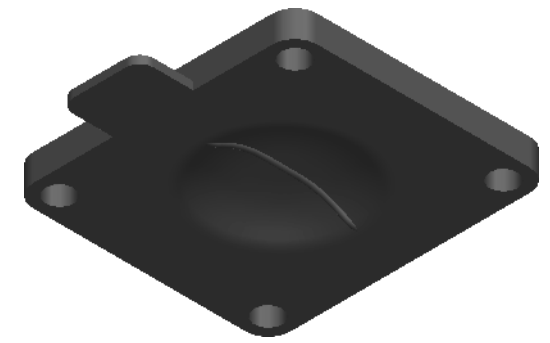



REVISION HISTORY			
REV	DESCRIPTION	DATE	APPROVED
F	Removed Kidney shape from diaphragm.	16/03/2022	JB



M4x0.7 INSERT SCREW

Ø 5.2 (4 Holes)

Replacement Diaphragm for :-
 OEM PART = 600010-M-13
 USED ON 3/4" (DN10-15) Diaphragm Valve

	NAME	DATE	 DIAPHRAGM DIRECT
DRAWN	M.MC KEON	03/16/22	
CHECKED	M.MC KEON	11/15/17	
Material - EPDM			TITLE
Complies with CFR 177.2600 and Conforms to USP Class VI Biological Reactivity Tests Section #87 and #88			DD07-GE7
SIZE A	FOOT PRINT DIMENSIONS		REV F
FILE NAME: DD07-GE7 RevF.dft			
SCALE: 1:1	Job: 51	SHEET 1 OF 1	

Disclaimer - Diaphragm Direct® does not manufacture, represent, nor sell OEM valves or diaphragms manufactured by any other company. Diaphragm Direct® brand diaphragms are not sponsored by any other manufacturers. Any name, model, part number, brand, image, material or referral is for descriptive purposes only. Diaphragm Direct® brand replacement diaphragms are guaranteed to fit OEM equipment and meet or exceed OEM specifications. Diaphragm Direct® brand replacement diaphragms are covered by the standard Diaphragm Direct® limited product warranty.